

Q-flow 3.0: Express setup

Manual code: Qf304009ENG
Version: 1.0
Applies to: Q-flow 3.04
Latest revision: 26/5/2009

Q-flow 3.0

Express setup

© Urudata Software
Canelones 1370 • Piso 2 CP11200
Montevideo, Uruguay
Phone: (598 2) 900 76 68 • Fax: 900 78 56

Table of Contents

Introduction	4
Requirements	4
Engines and web site requirements	4
Microsoft .Net Framework 3.5 installation.....	5
Before installing on Windows Vista, Windows 2008 and Windows 7	5
Enabling IIS components.....	5
Disabling user account control	7
Installation	8
Begin using Q-flow	12

Introduction

Q-flow's express setup is a simple way of installing the product. It is especially suitable for cases in which one wishes to test and evaluate Q-flow. This setup mode installs only that which is strictly necessary for Q-flow to work, in the simplest possible way.

When Q-flow is set up in this way, all of its components are installed in the same computer instead of being distributed in servers and clients. The database engine it uses is SQL Server Express Edition, which is free to use, and must be installed if it is not present in the computer where the installation is run.

If the components required to install Q-flow's engines are not available in the computer, these services will not be installed. The same is true for the web site. In any case, it is always possible to run Q-flow, albeit with limited functionality. For instance, should the engine not be installed, you will be able to design processes, but not to execute them.

Requirements

The requirements for running the installer are the following:

- One of the following operating systems:
 - Windows XP
 - Windows 2003
 - Windows Vista
 - Windows Server 2008
 - Windows 7
- Microsoft .Net Framework 3.5
- On Windows Vista and later versions, User account control must be disabled (see "Disabling user account control")

The Microsoft .Net Framework 3.5 is a freely distributable component. If it is not present in your computer, you may install it. The installer can be found inside Q-flow's CD. If you do not have Q-flow's CD, you may download the installer from the Internet.

Besides, SQL Server Express requires the computer in which it will be installed to have **512 MB** of RAM in order to function properly.

Engines and web site requirements

The engines and the web site require certain components to be available in the computer in which they are to be installed. However, it is possible to perform an installation in absence of these components. In this case, the engines and the web site will not be installed, but other components of Q-flow will, making it possible for other functionalities of the product to be evaluated anyway.

The web site requires IIS to be installed. The engines require MSMQ. The installer automatically checks whether these components are available.

Microsoft .Net Framework 3.5 installation

If you have Q-flow's CD, open the content of the CD and run the file dotnetfx35.exe.

If you do not have it, open, in the browser, the following web address:

<http://www.microsoft.com/downloads/details.aspx?FamilyId=333325FD-AE52-4E35-B531-508D977D32A6&displaylang=en>

Then, follow the instructions.

Before installing on Windows Vista, Windows 2008 and Windows 7

Windows Vista, Windows 2008 and Windows 7 have some characteristics specific to them that make it necessary to perform certain actions before running the installer.

Enabling IIS components

On versions of Windows that include Internet Information Services 7 (Windows Vista, Windows 2008 and Windows 7), components needed to install the engines and the web site may be present without being enabled. In these cases, before running the installer, some steps must be followed so that features required by Q-flow are enabled. To do that:

1. Open the Control Panel.
2. Inside the Control Panel, open Programs.
3. Choose the "Turn Windows Features On or Off" option.
4. In the Windows Features window, enable the following components:
 - a. ASP .Net (Figure 1)
 - b. IIS 6 Metabase and IIS6 configuration compatibility (Figure 2)
 - c. Windows authentication (Figure 3)

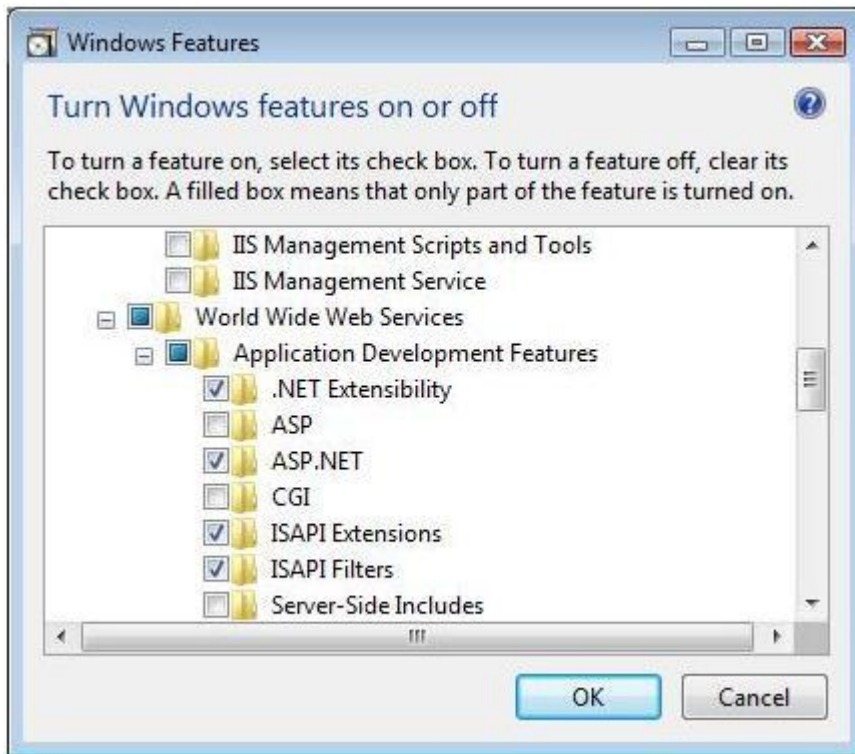


Figure 1 ASP .Net activation

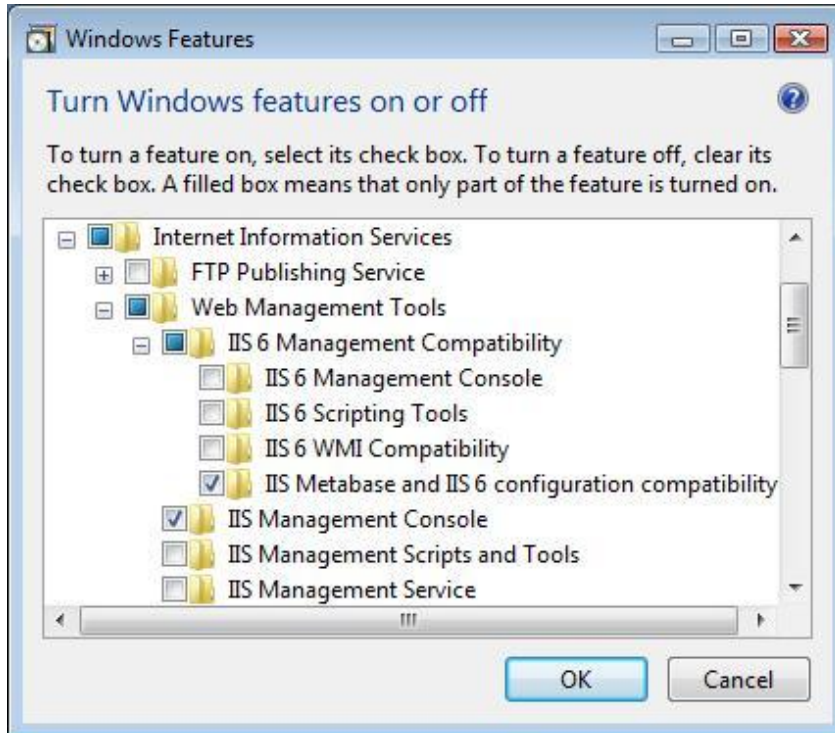


Figure 2 IIS 6 Metabase and IIS6 configuration compatibility



Figure 3 Windows authentication

Disabling user account control

In order for you to be able to run the installer in Windows Vista, Windows 2008 and Windows 7, the user account control feature must be disabled. To disable it, do as follows:

1. Open the Start menu, then Control panel.
2. Double click on "User accounts" (Figure 4).



Figure 4 Control panel, User accounts

3. Select "Turn User Account Control on or off".

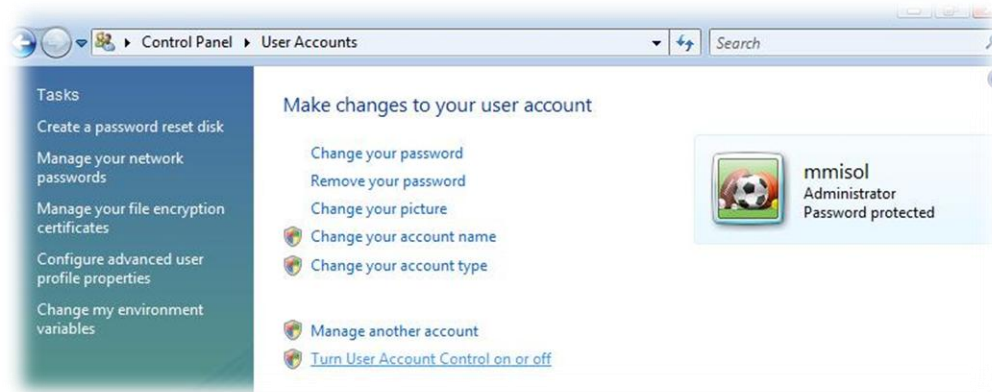


Figure 5 Turn off user account control

4. Uncheck the "Use User Account Control (UAC) to help protect your computer" option (Figure 6).



Figure 6 "User User Account Control (UAC) to make your computer more secure" option

Installation

To begin the setup process, do the following:

1. If you have Q-flow's CD, insert it into your computer's CD-ROM drive. This causes Q-flow's installer to run automatically. If this does not happen, open the CD contents and double-click on the Setup.exe file. If you do not have the CD, open the folder that contains the Q-flow installation files and double-click on the Setup.exe file. Figure 7 shows the first screen of the installer.



Figure 7 First screen of the installer

2. Select the “Express Setup” option, which appears on the right. The installer shows the first screen of the express setup process (Figure 8).

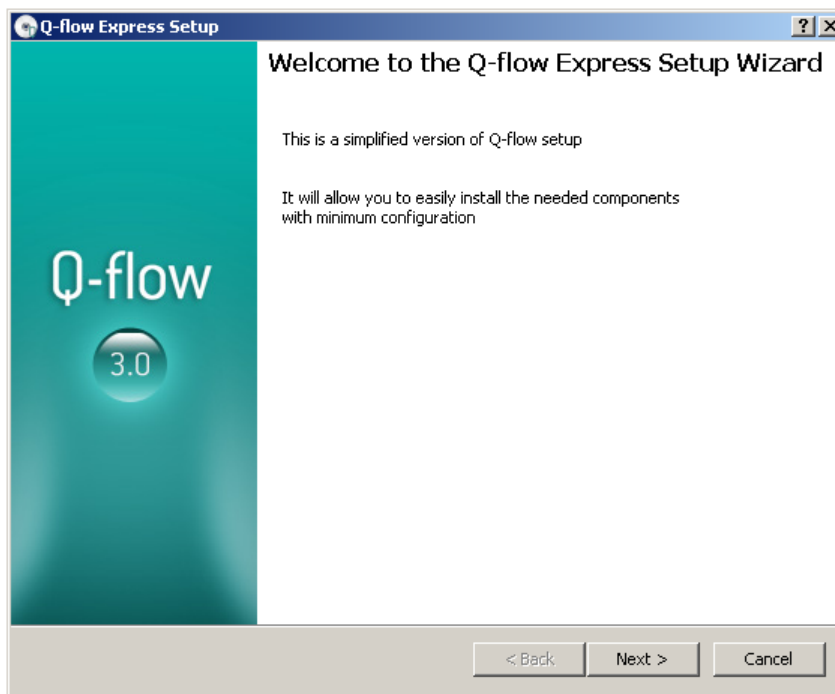


Figure 8 First screen of the express setup

3. Click on “Next”, and you’ll see the second screen of the installation process (Figure 9).

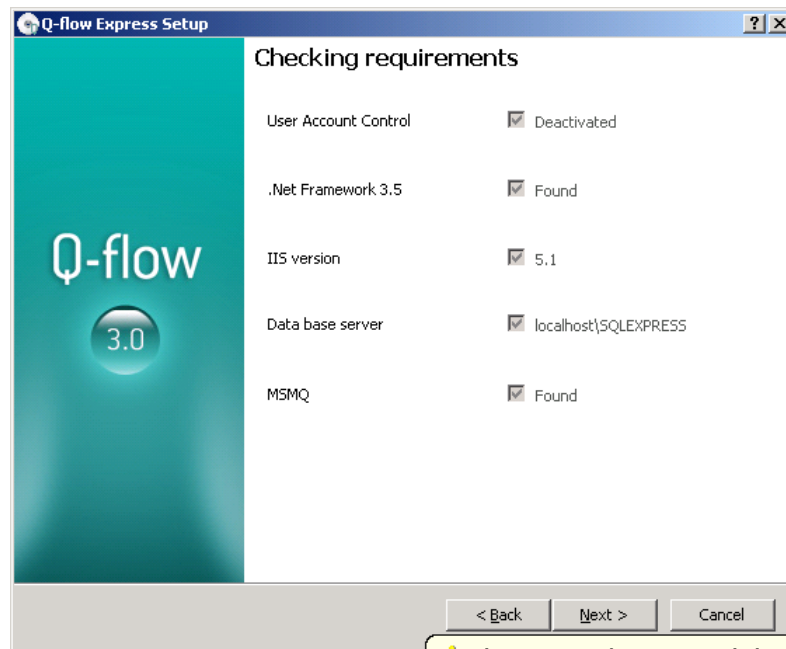


Figure 9 Second screen of the express setup

4. In the second screen, a list of the components necessary to completely install Q-flow appears:
 - **User account control:** user account control is a Windows Vista feature that must be disabled for the Express installer to work. If user account control is on, the installer will not go on with the installation process. Section “Disabling user account control” explains how to turn user account control off.
 - **.Net Framework 3.5:** if the .Net Framework 3.5 is not installed, the installer will not go on.
 - **IIS version:** this component is needed in order to install Q-flow’s web site. If this component is not available, or if the available version is older than the one needed, the web site will not be installed. This does not affect the possibility of designing processes with the process modeler. However, starting the execution of these processes will not be possible.
 - **Data base server:** the installer checks whether SQL Server Express, which is a free database engine, is available on the computer. If not, it installs it.
 - **MSMQ:** this component is necessary to install the web site and the Q-flow engines, which are the components that run the processes, move them from one step to the next, send e-mail messages, etc. If this component is not available, neither the web site nor the Q-flow engines will be installed. This does not affect the possibility of designing processes with the process modeler. However, running the processes will not be possible.
5. Click on “Next”. The installer will inform you of which components are not available on your computer, and which of the components of Q-flow will not be installed as a result. If the installer installs SQL Server Express, it will inform you about it too. Figure 10 shows the warning that appears if none of the components are installed. For the installation to go on, click on “Yes”. This will begin the installation process.

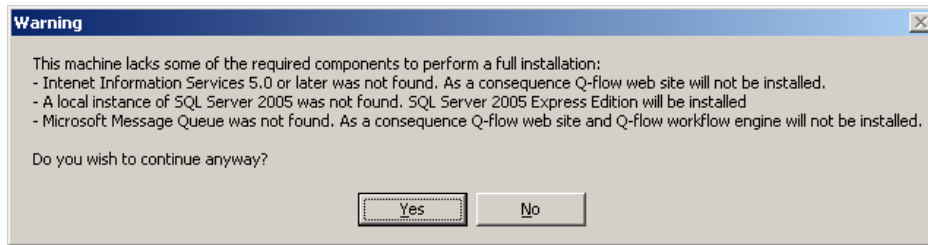


Figure 10 A warning that informs you that not all components required for the complete setup are available

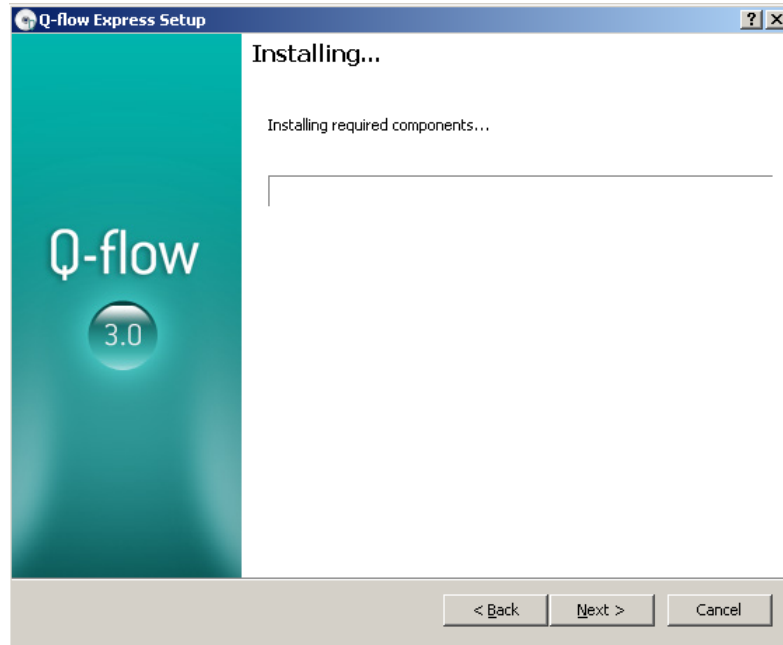


Figure 11 Installing the required components

6. Figure 12 shows the screen that informs you that the installation has finalized.

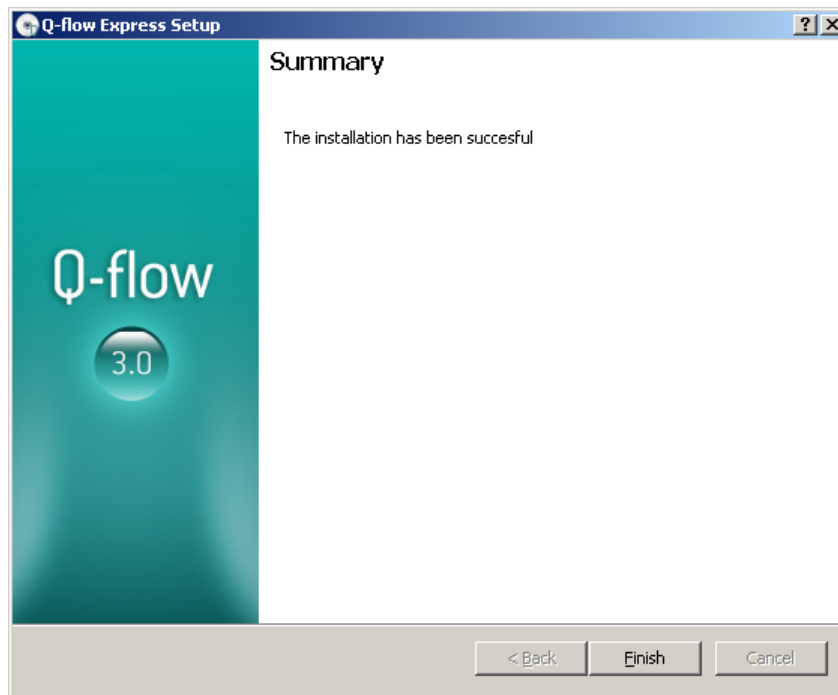


Figure 12 End of installation

Begin using Q-flow

To begin using Q-flow, it is recommended to open the business process modeler and attempt to design a process. This allows one to get familiar with the most important concepts of designing a process. There is a tutorial at the Q-flow web site that explains, step by step, how to develop the model of a simple process, and how to execute that process. This manual can be downloaded from <http://www.urudata.com/documentos/eng/Tutorial%20de%20Q-flow.zip>.

Another manual that can be useful is the business process manager manual, which describes in detail all of the features of this tool. This manual and all others are available at the Q-flow web site:

<http://www.urudata.com/qflow/descargalink.aspx>